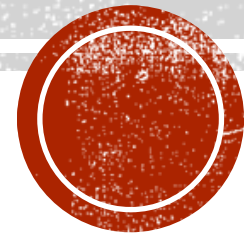


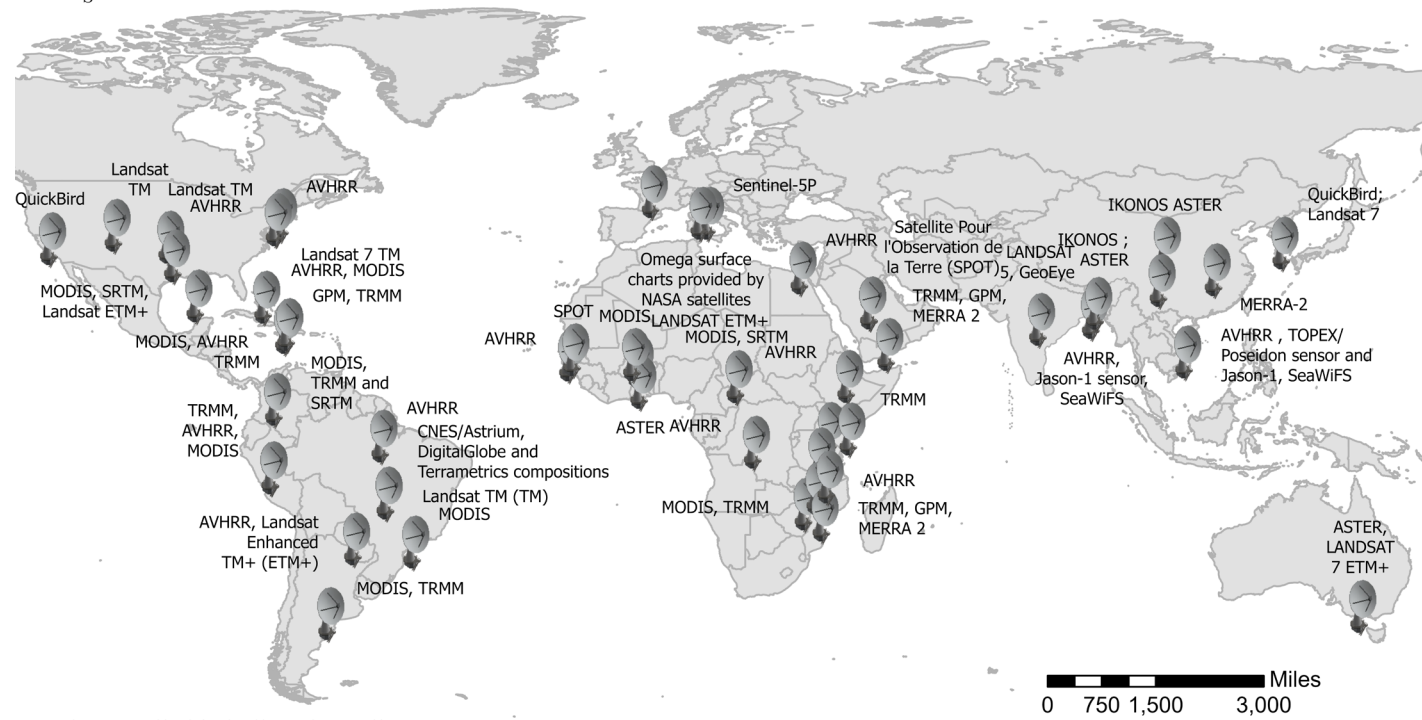
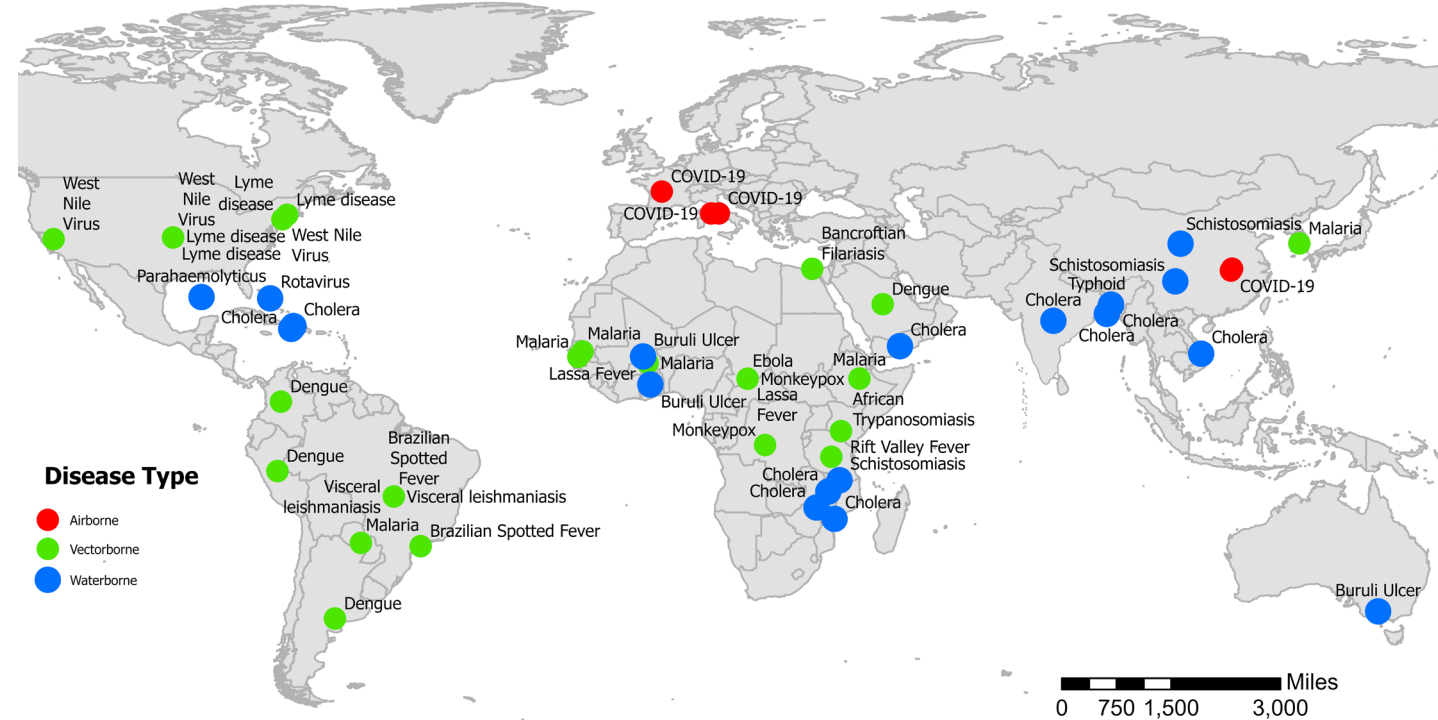
INFECTIOUS DISEASES GROUP



QUARTERLY ROUND UP-APRIL 2024

- Effort for [global database of infectious diseases](#), specifically for those pathogens whose life cycle is influenced by climate and weather process.
- Discussions ongoing on PRISMA/PROSPERO model
- Epidemiological database for various environmental diseases needs curation.
- Health essential variables – data continuity is necessary – this may be an output of this database
- Sadie Ryan and Catherine Lippe are taking lead on formation and curation of database (sjryan@ufl.edu ; clippi@ufl.edu)
- Antar Jutla and Moiz Usmani are taking lead on developing visualization routines from collected data.
- U of Florida hired two students on hourly basis to initiate this work with hopes that boarder community will provide inputs.





MEETING 02/23/2024

Josh Colston

Osuolale Olayinka

Erin Rees

Antar Jutla

Moiz Usmani

Rania Wasfi

Kim Locke

Mike Wimberly

Sadie Ryan

Tatiana Loboda

Cat Lippi

University of Virginia

Elizade University, Nigeria

Public health agency of Canada

UF

UF

Public health agency of Canada

NASA Goddard Earth Science

University of Oklahoma

UF

UMD

UF



DISCUSSION

- Geoinfectious database of infectious diseases.
- PRISMA model/PROSPERO model
- Broader question in hand, scale issues, satellites used and will be useful.
- What is needed for EO? Knowing new things will help correlate with epi data.
- Health essential variables – data continuity is necessary – this may be an output of this database
- Send search terms to Sadie (sjryan@ufl.edu ; clippi@ufl.edu)
- Sadie Ryan - funding grant for database for dashboard (UF Climate Institute)
- Antar Jutla – funding for putting things on dashboard. (UF USGS Water Institute)
 - We don't want to make this UF initiative only- community inputs needed.

