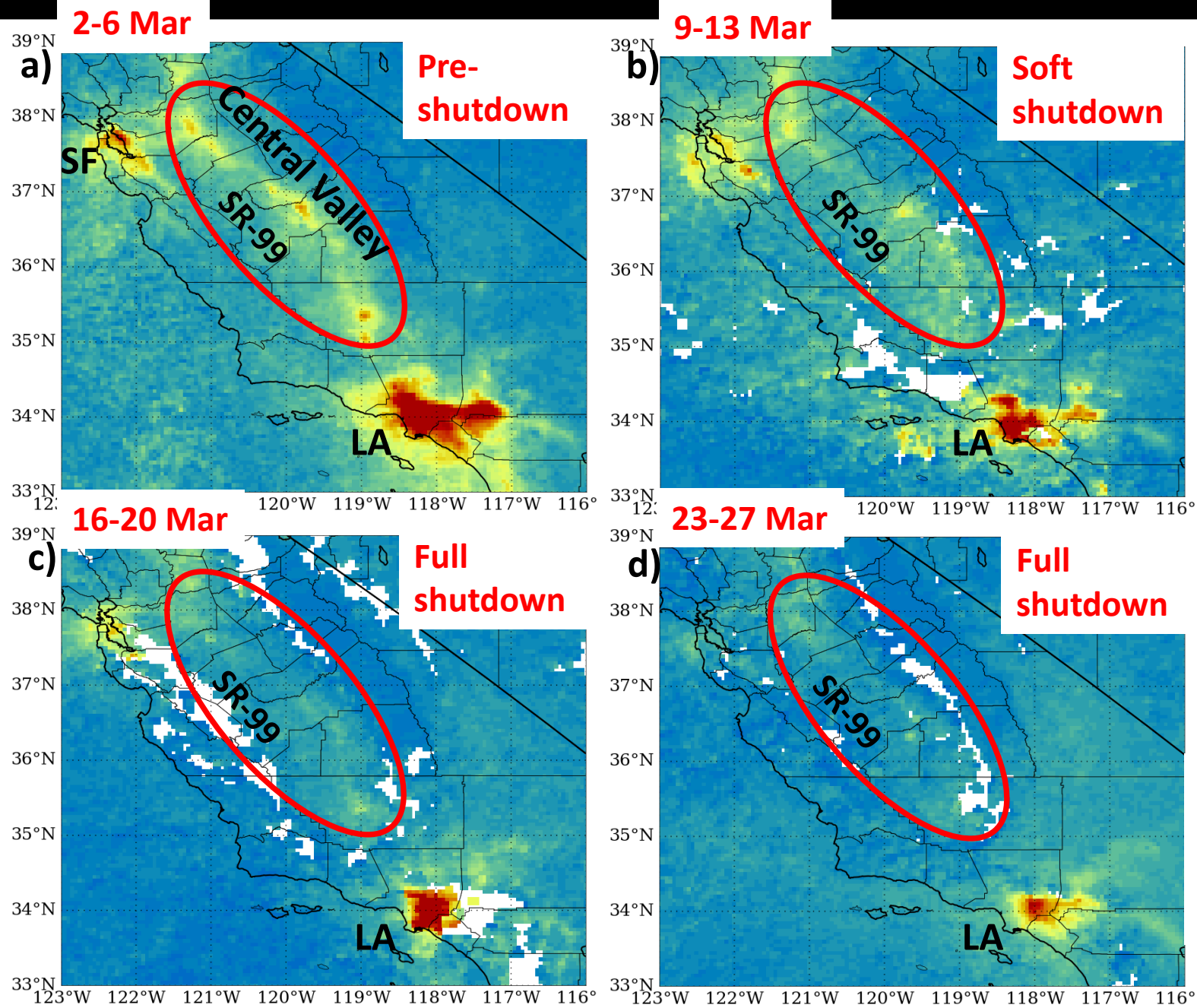


# Satellite Observes Economic Slowdown in CA



➤ Weekday averaged NO<sub>2</sub> maps from TROPOMI L2 product (5.6 x 3.5 km<sup>2</sup>) show a reduction in tropospheric NO<sub>2</sub> during different stages of shutdown measures in California during March

- Significant reduction in urban emissions from both Los Angeles and San Francisco, along with decrease in Central Valley due to less traffic particularly along State Route 99 (SR 99)
- Warmer temperatures and higher mid-day solar angles during this seasonal transitional period are also contributing to the lower NO<sub>2</sub> concentrations during March

Figures produced by A. Naeger (UAH)