



Copernicus VS COVID 19

Copernicus Emergency Service
Activation in Italy
DG DEFIS, European Commission



Space



Copernicus EU



Copernicus EU



Copernicus EU



www.copernicus.eu





Copernicus is a European Union Programme, coordinated and managed by the European Commission, aimed at **developing European information services based on satellite Earth Observation and in situ (non-space) data.**

Six **Copernicus Core Services** transform satellite and in situ data into **value-added information**, specifically:



Atmosphere
(CAMS)



Marine
(CMEMS)



Land
(CLMS)



Climate
(C3S)



Emergency
(EMS)

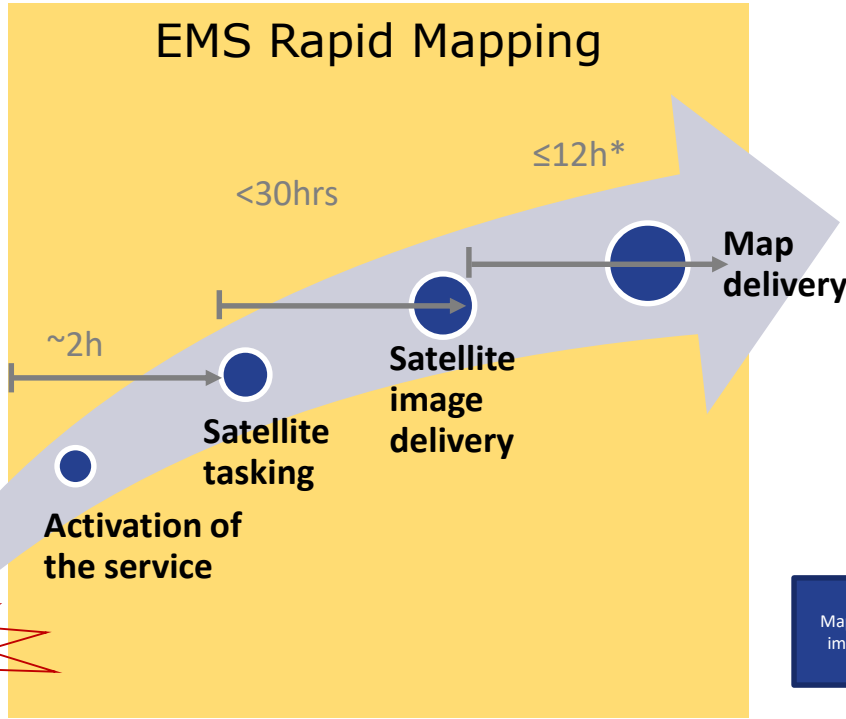


Security



Emergency Management

Rapid Mapping Timeline



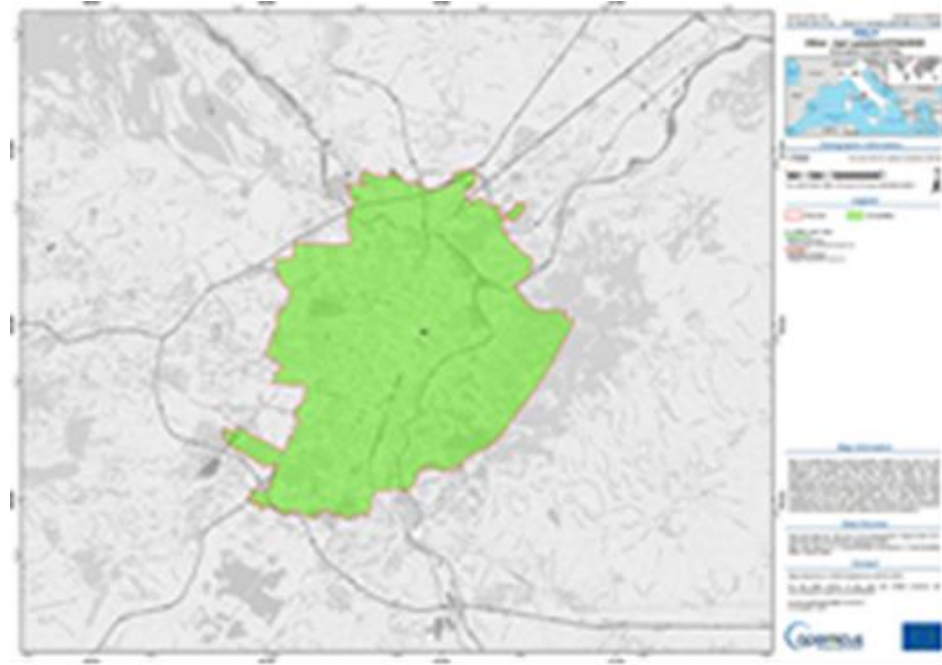
* Production time in service level 1





Rapid Mapping activation – Italy

- Activation by Italy's Civil Protection Department
- Provision of maps to better monitor temporary health facilities (such as triage facilities, field hospitals)
- Combines space based data with other geospatial data
- Activation area: Turin region

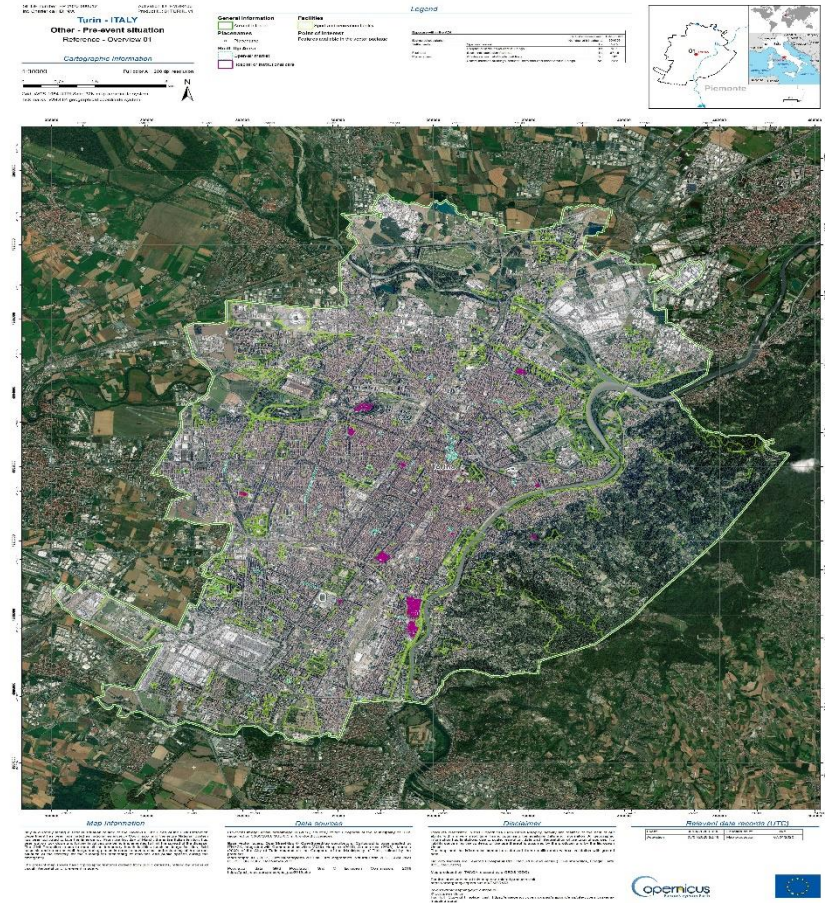


Activation Extent Map



EMSR433 COVID-19 outbreak in Italy

- Link to view and download maps of the ongoing activation:
- <https://emergency.copernicus.eu/mapping/list-of-components/EMSR433>

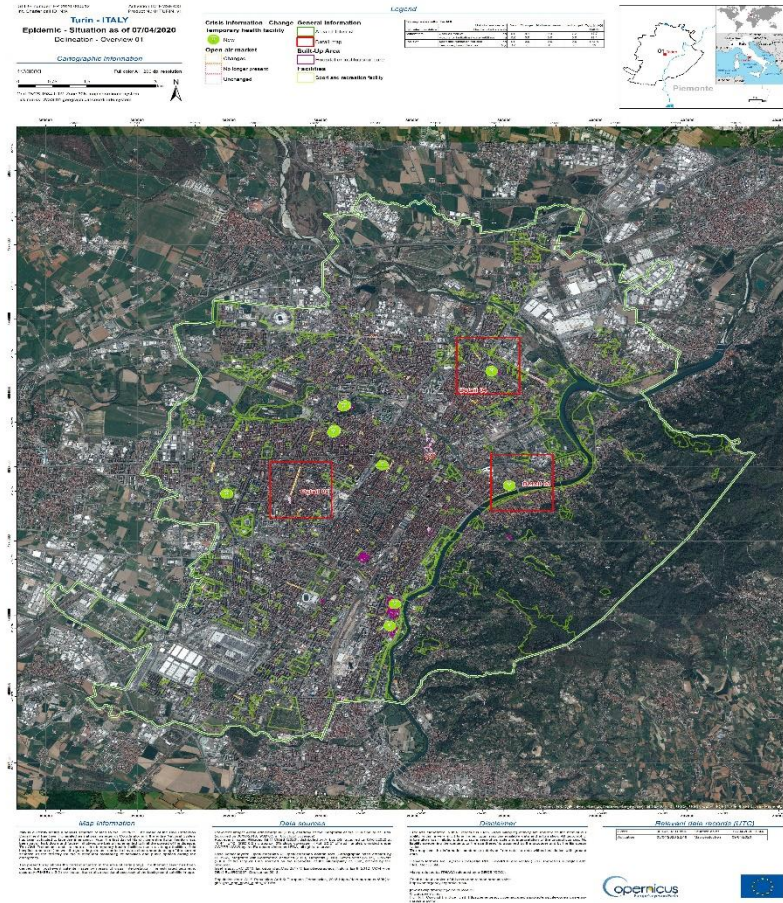


Reference Map



Delineation products

provide an assessment of the event impact and extent and, if requested, an update of the situation (monitoring). They are derived from images acquired as soon as possible after the emergency event.





Emergency Management

WWW: <https://emergency.copernicus.eu>

 @CopernicusEMS

